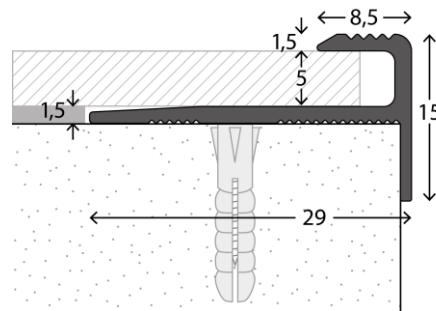




LIVYN

Quick-Step® Livyn stair profile CLICK



Product specifications

Quick-Step® stair profile CLICK for Livyn floors

QSVSTPCLICKSILV

Scratch-resistant aluminium, silver colour

Dimensions 1 PC: 15 x 29 x 2000 mm

Order quantity: 1 PC

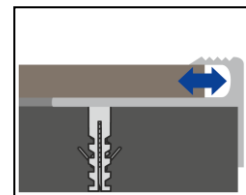
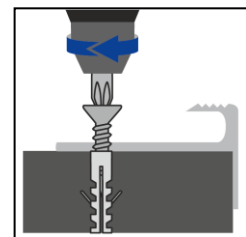
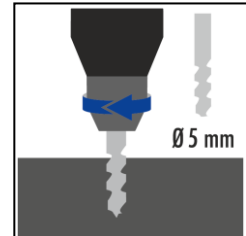
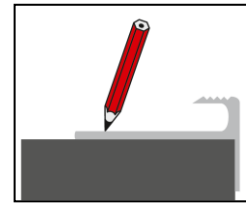
To be used with **4,5 & 5 mm Livyn floors.**



Note: For safety reasons, Quick-Step® recommends to glue down your Livyn floors on stairs.

Installation

- Make sure the step is clean, dust-free and level.
- Saw the profile to the correct length.
- The Quick-Step® stair profile has pre-drilled and countersunk drill holes. Mark the drill holes on the subfloor with a pen.
- Use screws with a diameter of 5 mm.
- **Installation on mineral subfloors:** drill the holes, remove all drilling dust and insert plugs first. Then fix the stair profile with screws.
- **Installation on wooden subfloors:** evaluate the need to use plugs (depends on the type of wood), alternatively screw directly into the wooden subfloor.
- Install the Livyn underlay, avoiding an overlap with the stair profile.
- Then insert the Livyn floor in the profile, assuring some space to allow the floor to contract and expand after installation.



- When installing this profile on the stairs of your staircase, please glue down your Livyn floor instead of installing it with underlay.
- Use this profile on every outer corner of your stairs.
- For the inner corner of the stairs no profile is needed. With the Quick-Step® Livyn tool and cutting knife you can precisely cut the Livyn plank to fit the inner corners of your staircase.

