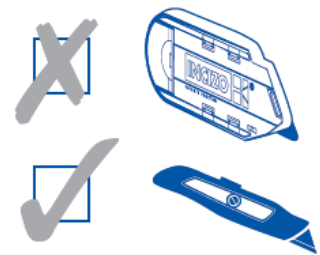


QUICK•STEP® Paintable cover skirting with Incizo® technology



LAMINATE *Parquet*



QSISKRCOVERMD240

128x16x2400 mm

Package: 6 pcs/pack

Unlike with other paintable skirtings in the Quick•Step® range, no Incizo® knife is supplied with the cover skirting. You can cut it with an ordinary cutter.

Product description

The Quick•Step® paintable cover skirting is designed to be installed over an existing skirting board. This saves time during installation as the old skirting board can simply remain in place: you do not need to remove it. This way, you also avoid damage to the wall.

Usage

Wood is the main component of your Quick•Step® floor. Because humidity levels in a room can vary - between summer and winter for example - the floor must be able to move, to expand and contract on all sides. For this reason an expansion gap of at least 8 to 12 mm needs to be foreseen around the floor. Quick•Step® offers a wide range of skirting boards and profiles to finish off this expansion gap. (for more information: www.quick-step.com).

The Quick•Step® paintable skirting cover with Incizo® technology offers the possibility of painting your skirting the same colour as your wall. Or you can simply not paint the skirting and leave it white.

Properties

- ✓ Easy
 - The Quick•Step® cover skirting is developed to be installed over an existing skirting board rather than having to remove it first. As such, the job can be done quickly and without damaging the wall.

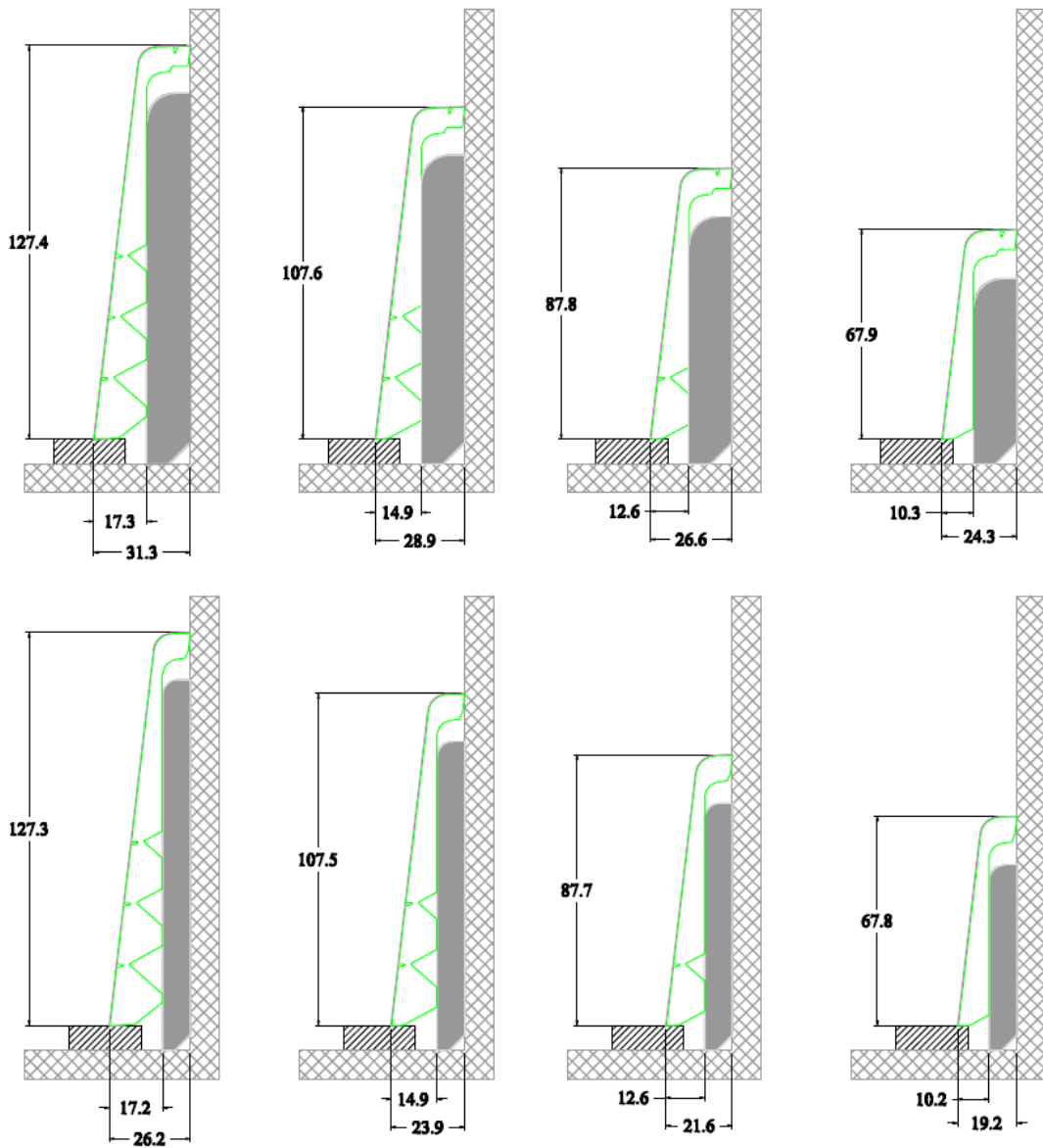
- ✓ The paintable cover skirting offers many possibilities, thanks to the patented Incizo® technology:
 - You determine the height of the skirting board. There are four different heights to choose from.
 - You can also adjust the width of the cover skirting to the width of the skirting board that is to be covered.

- ✓ Can be painted on immediately, with most paints.
 - TIP: Always test the bonding of the paint first. If necessary, apply a primer or sand down the surface first.**

- ✓ Painting, however, is not a must.
 - You can choose not to paint the skirting board and simply use it as white skirting.

- ✓ Cables can be hidden behind the skirting board.

Variable height and width



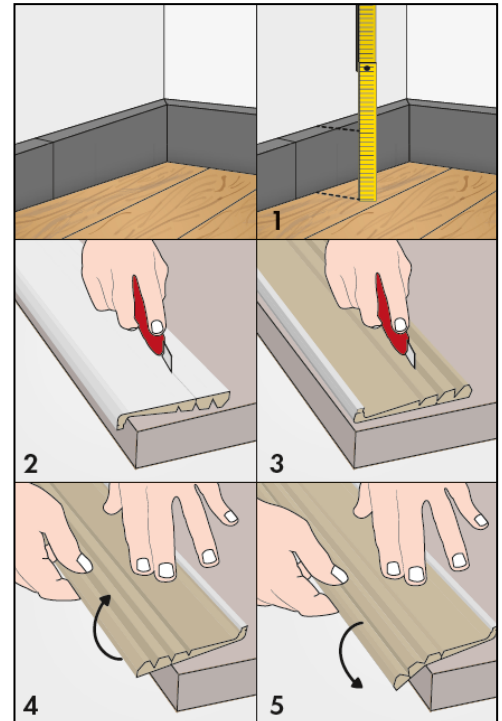
Instructions for use

1. The correct height

- Measure the height of the existing skirting board.
- Place the skirting board on a flat surface (such as a table), with the white front facing up. Ensure that the flat surface of the reverse side is properly supported.
- Choose the height of the Quick•Step® cover skirting. Make sure it is high enough to cover the existing skirting board.
- Cut the front edge of the skirting board with a cutter. Place the cutter in one of the foreseen grooves and slide it with a smooth pulling motion along the entire length of the skirting board.

TIP: wear gloves!

- Place the skirting board with the back facing up. Again, make sure that the flat surface is fully supported.
- Cut in the opposite groove on the back of the skirting board. Press a little harder.
- You can now easily break off the surplus part of the skirting board. For stability, place one hand on the flat part of the skirting board that you will be using. Break off the other part using your other hand.

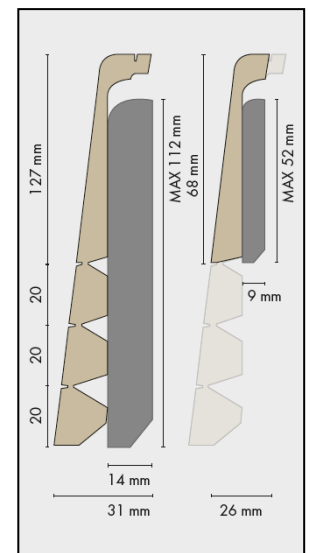


2. The correct width

- Measure the width of the existing skirting board.
- If the width is less than or equal to 9 mm, then make the upper part of the skirting board narrower. To do this, place the skirting board on a flat surface with the white face down, once again properly supported. Place the cutter in the groove and slide with a smooth pulling motion along the entire length of the skirting board.

TIP: wear gloves!

- You can now easily break off the surplus part of the skirting board. Place one hand to stabilise the flat part of the skirting board that you will be using, and break off the other part using your other hand.



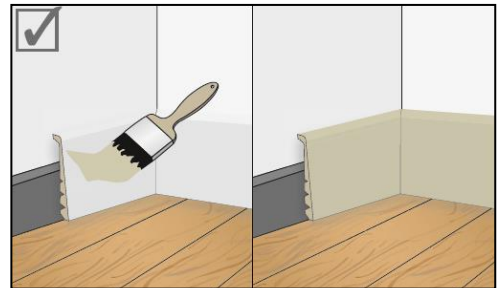
3. Installation and finishing

- Attach the cover skirting to the existing skirting board using Quick•Step® One4All adhesive.

TIP: make sure the surface of the existing skirting board is cleaned and degreased, so that the adhesive adheres properly.



- Paint the skirting board in the desired colour or use it as a white skirting board.
(When painting, always test the bonding of the paint. If necessary, apply a primer or sand down the surface first)



4. Finishing off corners

- Look for or cut a small block with the same width as that of the existing skirting board.
- When mitre-sawing the skirting cover, put the block behind the skirting board. This will give you the correct angle.

